

LANmark-6 Snap-In Connector

LANmark-6 Evo Snap-In Connector Category 6 Screened

Contact

UK Distributor
Phone: 01480 415400
sales@comtec-comms.com

Nexans Ref.: N420.666

- Category 6 Snap-In connector
- 360° screened, compatible with foil shielded and braid shielded cables
- Fast and easy termination without punch down tool
- Wiring according to colour code T568B or T568A
- Accepts solid wire from 24 to 22 AWG
- Reterminable
- Supports POE Plus applications (15 Watts per pair)
- An adapter can be added to fit the keystone format

DESCRIPTION

Application

Nexans LANmark-6 Evo Snap-In connectors are manufactured and tested to the latest Category 6 specifications defined in the International and American cabling standards and are designed to meet or exceed the quality and performance criteria needed to support all applications up to 250 MHz.

- 10 BASE-T Ethernet
- 100 BASE-T Fast Ethernet
- 1000 BASE-T Gigabit Ethernet
- 155 Mb ATM
- 622 Mb ATM
- 1.2 Gb ATM
- POE Plus (including IEC 60512-9-3 and IEC 60512-99-001)
- Future Class E applications

Design

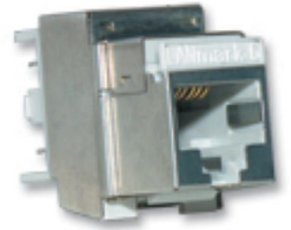
Nexans LANmark-6 Evo Snap-In connectors are designed to match with LANmark-6 cable and patch cords and to complement all LANmark modular components, such as:

- Snap-In patch panels (fixed, sliding and angled) and Zone Distribution Boxes
- Snap-In outlet modules (UK, US, European and German style)

Performance

Nexans LANmark-6 Evo Snap-In connectors meet or exceed the requirements for Category 6 connecting hardware as described in ISO/IEC 11801, IEC 60603-7 and EIA/TIA 568-C.2.

Installation



LANmark-6

STANDARDS

International IEC 60603-7-5;
IEEE 802.3af (PoE);
IEEE 802.3at (PoE+)



Electro magnetic interference resistance



Maximum operating temperature
- °C



Minimum operating temperature
- °C

All drawings, designs, specifications, plans and particulars of weights, size and dimensions contained in the technical or commercial documentation of Nexans is indicative only and shall not be binding on Nexans or be treated as constituting a representation on the part of Nexans.

Generated 10/09/21 www.nexans.co.uk Page 1 / 3

LANmark-6 Snap-In Connector

LANmark-6 Evo Snap-In Connector Category 6 Screened

Contact

UK Distributor

Phone: 01480 415400

sales@comtec-comms.com

The wire organiser guarantees fast and easy termination of the LANmark-6 Evo Snap-In connector without the need for a punchdown tool. An optional comfort tool (N420.567) can be used to increase the ease of installation.

A stranded version is available for CP to TO links.

Guarantees

The LANmark-6 Evo Snap-In performance is guaranteed to meet or exceed the requirements of the above mentioned standards.

Traceability codes on both connector and packaging ensure quality validation.

Installations with LANmark-6 cable and connectivity are qualified for a 25 year full system warranty, which includes Parts, Installation, Channel Performance and Application Support, as described in the Nexans Certified System Warranty.



Electro magnetic interference resistance

-



Maximum operating temperature

- °C



Minimum operating temperature

- °C

All drawings, designs, specifications, plans and particulars of weights, size and dimensions contained in the technical or commercial documentation of Nexans is indicative only and shall not be binding on Nexans or be treated as constituting a representation on the part of Nexans.

Generated 10/09/21 www.nexans.co.uk Page 2 / 3

LANmark-6 Snap-In Connector

LANmark-6 Evo Snap-In Connector Category 6 Screened

Contact
UK Distributor
Phone: 01480 415400
sales@comtec-comms.com

CHARACTERISTICS

Construction characteristics

Colour	Light grey
Screen	Yes

Dimensional characteristics

Height	23.2 mm
Width	16.8 mm
Depth	36 mm
Approximate weight per piece	- kg
Number of connectors	-

Usage characteristics

Category	Cat. 6
Range	LANmark-6
Component function	Connector
Field of application	Indoor
Electro magnetic interference resistance	-
Maximum operating temperature	- °C
Minimum operating temperature	- °C